

## GGZ Delfland



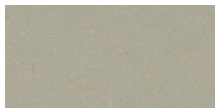
GGZ Delfland has been demolishing, building and renovating continuously since 2012. Recently, the polyclinic De Stadhouder and polyclinic De Toren in Schiedam were up for grabs. The renovation had to contribute to a modern, comfortable, safe and sustainable accommodation for people with a psychiatric disorder. In collaboration with Ellen Dekker, facility manager at GGZ construction and property, and Femke Touwslager of Touwslager Projectadvies, the choice was made for a design with guts and plenty of room for colour. Touwslager: "Forbo had always been on our radar, but the Environmental Care Matrix, which stands for sustainable business practice, made Forbo floors even more attractive. Because Marmoleum is a 100% natural product and, thanks to Topshield, no more invasive maintenance is needed, various Marmoleum floors were chosen. In the restaurant, we wanted to create a hospitality atmosphere, but didn't know how to achieve this with Marmoleum. Michiel van Nieuwland of Forbo's Ontwerpstudio gave us advice and suggested Marmoleum Modular planks in four different colours. The result was a beautiful floor design with a natural wood look that gave the restaurant the hospitality look it was looking for. To provide durable protection for the floors and to save on maintenance costs, a Coral cleaning mat was chosen that matches the rest of the interior".

Project name	GGZ Delfland
Location	Schiedam
Architect	Leeuwenkamp Architecten
Building Contractor	Bouwbedrijf Van der Spek
Interior Designer	Touwslager Projectadvies
Installation by	Iedema Projectstofferings

### Used Products



Marmoleum  
Cocoa  
white chocolate



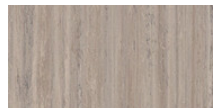
Marmoleum  
Concrete  
orbit



Marmoleum  
Concrete  
fossil



Marmoleum  
Modular  
rocky ice



Marmoleum  
Modular  
trace of nature

