

## Faith Community Church, Perth



Faith Community church is a newly built state of the art building, which comprises a modern and well-appointed 1400-seat auditorium, a 400-seat and 200 seat multi-purpose hall as well as backstage facilities, music practice rooms, foyer, café, classrooms and much more! It is certainly not your regular church complex. Forbo Flotex was chosen for its ability to withstand heavy foot traffic as well as providing a contemporary aesthetic thanks to the new digital plank designs. There are over 80 million nylon 6.6 fibres per m<sup>2</sup> which offer superior wear and abrasion resistance. Flotex provides a healthier indoor environment as dirt and allergens are easily removed by vacuuming, in fact, Flotex releases 30% more dirt during cleaning than conventional carpet. With the hundreds of thousands of visitors per year, the allergy UK approved floor covering was a perfect fit for a healthy floor. Additionally, 200m<sup>2</sup> of Coral entrance flooring was installed to help stop dirt and moisture entering the building.

Flooring Contractor Choices Flooring Joondalup

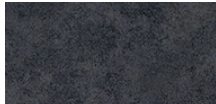
Interior Architect BM Projects - Bernard Lim

Photography Acorn

### Featured Flooring Products



Flotex Seagrass  
planks  
liquorice



Flotex Colour  
Calgary ash



Flotex Colour  
Metro citrus



Flotex Seagrass  
planks  
charcoal



Flotex Seagrass  
planks  
almond



Flotex Planks  
Concrete  
cloud





Flotex Planks  
Concrete  
thunder



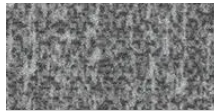
Flotex Planks  
Box-cross  
pearl



Flotex Planks  
Box-cross  
anthracite



Flotex Planks  
Box-cross  
granite



Flotex Planks Lava  
Tambora



Flotex Planks Lava  
Krakatoa



Allura Flex  
Material  
natural concrete



Flotex Linear tiles  
Integrity² granite



Coral Brush  
hurricane grey





