

Dolphin Discovery Centre



The impressive redevelopment of the Bunbury Dolphin Discovery Centre exhibit, including 13 aquariums along with a cafe and function areas are among the new features housed in an impressive landmark building designed by Bunbury-based MCG Architects. Forbo's Surestep safety floor was chosen for its optimum combination of slip resistance and ease of maintenance. Safety floor is a function first, however, there is an increased demand for design and colour in these functional areas. The Forbo Step safety floor collection combines design with safety in a strong visual offer including co-ordinated colour options and new structures not usually associated with the slip rated flooring category.

Flooring contractor Trevors Bunbury

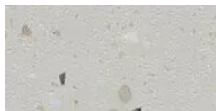
Architect

MCG Architects, Bunbury

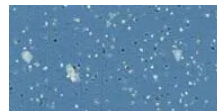
Used Products



Surestep Material
blue concrete



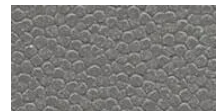
Surestep Star
smoke



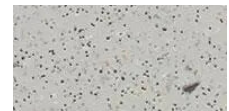
Surestep Original
cloudy



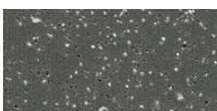
Surestep Original
elephant



Safestep Aqua
elephant



Safestep R11
smoke



Safestep R11
lava



Safestep R12
smoke

