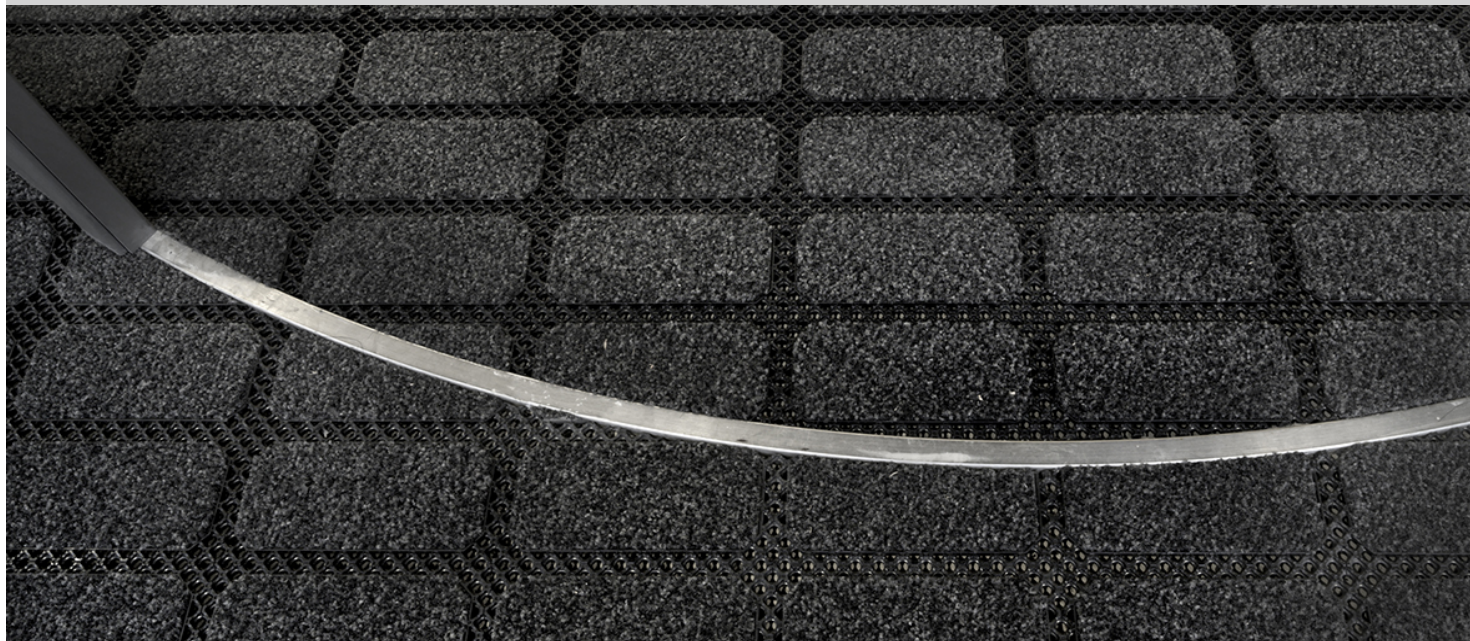


Coral Click - Rigshospital



When faced with a challenging symmetrical entrance system, Rig hospital in Copenhagen looked to Coal Click for a solution. The hospital's large northern 68000m2 and 300 bed wing has been fitted with a 50m2 Coral Click entrance system, in order to remove dirt and moisture being tracked into the building and protect the interior floor finishes. The modular format of Coral Click was ideal for the challenging shape of the entrance system, circular with a revolving door, and the tile format allows elements to be replaced when worn. The installer, KD floors in Rockside, said 'Coral Click tiles were easy to 'click' together using a rubber mallet and enabled a professional installation and finish'. As the textile element of Coral Click is Coral Brush, the entrance system effectively removes up to 95% of dirt and moisture from shoes and the treads of wheelchairs. Coral Brush also has strong environmental credentials as the yarn used in manufacture in 100% Econyl regenerated yarn which is made from discarded fishing nets.

| | |
|-----------|-------------------------------|
| Arhitekts | Arhitekt MAA Anne Strandgaard |
| Celtnieks | KD Gulve, Roskilde |
| Fotogrāfs | Peter Jørgensen |
| Arhitekts | 3XN Architects |

Izmantotie grīdas segumi



Coral Click flīzes
hurricane grey

