

CNTW Medical Education Centre



Cumbria, Northumberland, Tyne and Wear NHS Foundation Trust (CNTW) continuously strive to provide better education for the next generation of medical professionals. As such, with help from NTW Solutions they wanted to create a modern learning space for their medical education centre in Gosforth. Forbo Flooring Systems' Flotex, Modul'up and Allura Flex ranges all played a key role in bringing this project together. NTW Solutions was established in 2017 by CNTW NHS Foundation Trust to provide a range of important services, across a variety of teams. They work alongside stakeholders such as the NHS Foundation Trust to provide high-end project outcomes. Offering a variety of foundation placements, the medical centre will provide young nurses and doctors with a good base level of education to then move forwards in their chosen speciality. To do this there was a variety of factors to review when looking at designs.

Date of completion 2021

Commissioned by CNTW NHS Foundation Trust

Interior designer NTW Solutions

Used Products



Flotex Frameweave planks



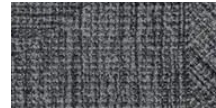
XX Allura Flex Wood bleached timber



Flotex Frameweave planks



Flotex Frameweave planks



Flotex Frameweave planks



XX Allura Flex Wood greywashed

