

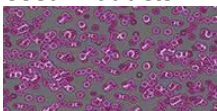
Arena Montpellier



Opened in 2010, the Park&Suites Arena is located on the Montpellier Parc des Expositions easement. The place is at the same time a theater, general purpose room and exposition and convention hall with an accommodation capacity of 14 800 spectators, thanks to its 13 500 m² of surface.

Project name	Arena
Location	Montpellier - 34
Date of completion	2010
Commissioned by	REGION LANGUEDOC ROUSSILLON
General contractor	CABINET A+ Philippe Cervantès - 34 (Montpellier)
Installation by	SOCAMO - 34
Photographer	Benoit Wehrle

Used Products



Flotex created by
Sottsass
Bacteria

