

入口大厅/走廊-荷兰-ROC Landstede Harderwijk学校



荷兰ROC Landstede Harderwijk学校

建筑师 Caroline Molenaar
Interieurarchitect Harderwijk

摄影师 Higher View Mediaproductions,
Harderwijk

安装公司 Vos project inrichting
Harderwijk

工程地点 Harderwijk, NL

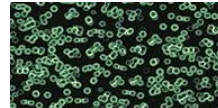
使用过的地面材料



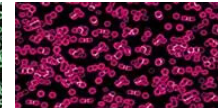
Flotex created
by Sottsass
Wool



Flotex created
by Sottsass
Wool



Flotex created
by Sottsass
Bacteria



Flotex created
by Sottsass
Bacteria

